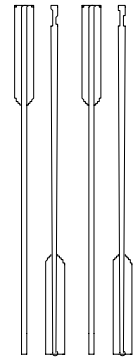
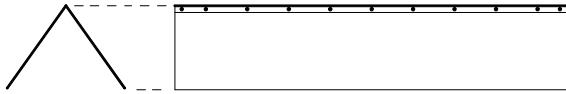


Break-down Dolly:
 From 2x4 x 6 ft good quality wood.
 Bolt together in middle, mount tires.
 Lever up bow and slip forward of CG.
 Secure to Boat with trucker's hitch.

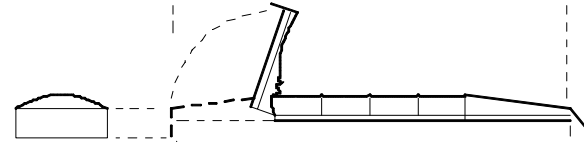


Four 7 ft Oars

ACCESSORIES:

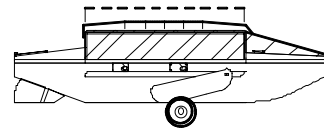
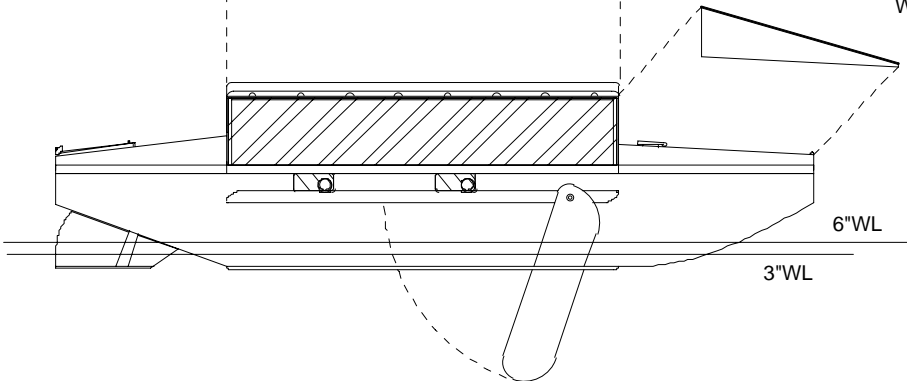


1/4" Plywood Hail Shelter:
 Split sheet longitudinally and hinge along middle.
 Secure at ToeRails. Stow flat on Cabin Sole.



Fabric Gangway Cover:
 End flaps and hatches open
 for access and ventilation.
 Snap to Coamings.

WindShield:
 Clear Vinyl snaps to Cabin and Deck.
 Streamlines for rowing in moderate headwinds.



Statistics:

Length: 15 ft 6 in

Beam Hull: 4 ft 1/2 in

Beam Extreme: 4 ft 8 in

Draft Board Up: 3 to 6 in

Draft Board Down: to 3 ft

Displacement @ 3" WL: 650 lbs

Displacement @ 6" WL: 1400 lbs

Weight Empty: 425 lbs

Cabin Length: 7 ft 10 in

Cabin Width: 4 ft

Cabin Height: 3 ft 4 1/2 in

Waterline Upright (6" Draft): 12 ft

Waterline Heeled: 14 ft

Hull Speed Upright: 4 Knots

Hull Speed Heeled: 4.5 Knots

Rowing Speed Steady: 3+ Knots

Rowing Speed Sprint: 4+ Knots

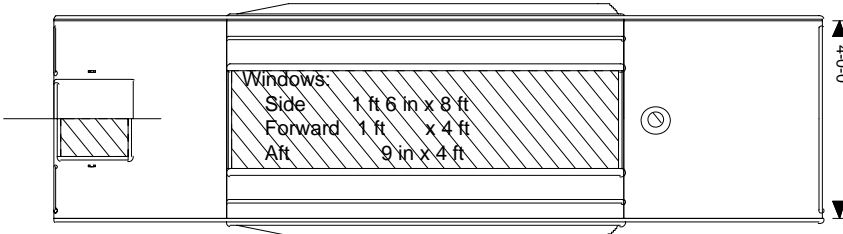
Sail Area: 84 sq ft

15-6-0
3-6-0

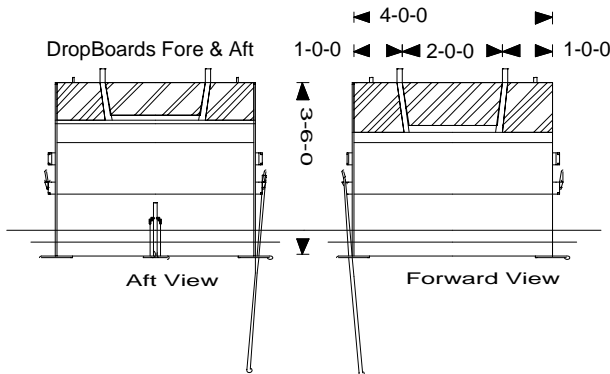
8-0-0

8-0-0

15-6-0
4-0-0



DropBoards Fore & Aft



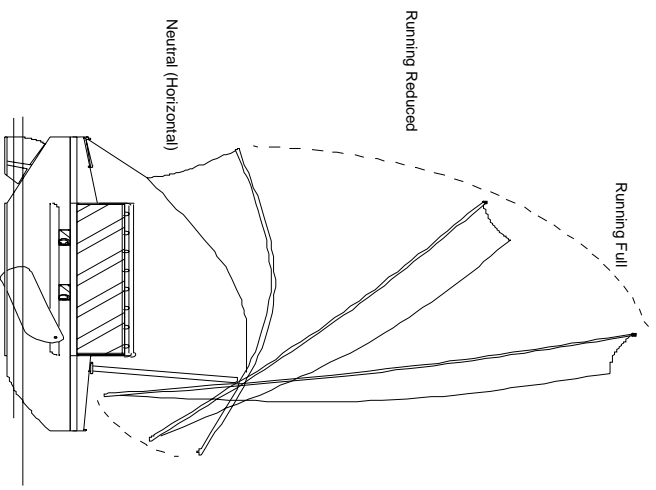
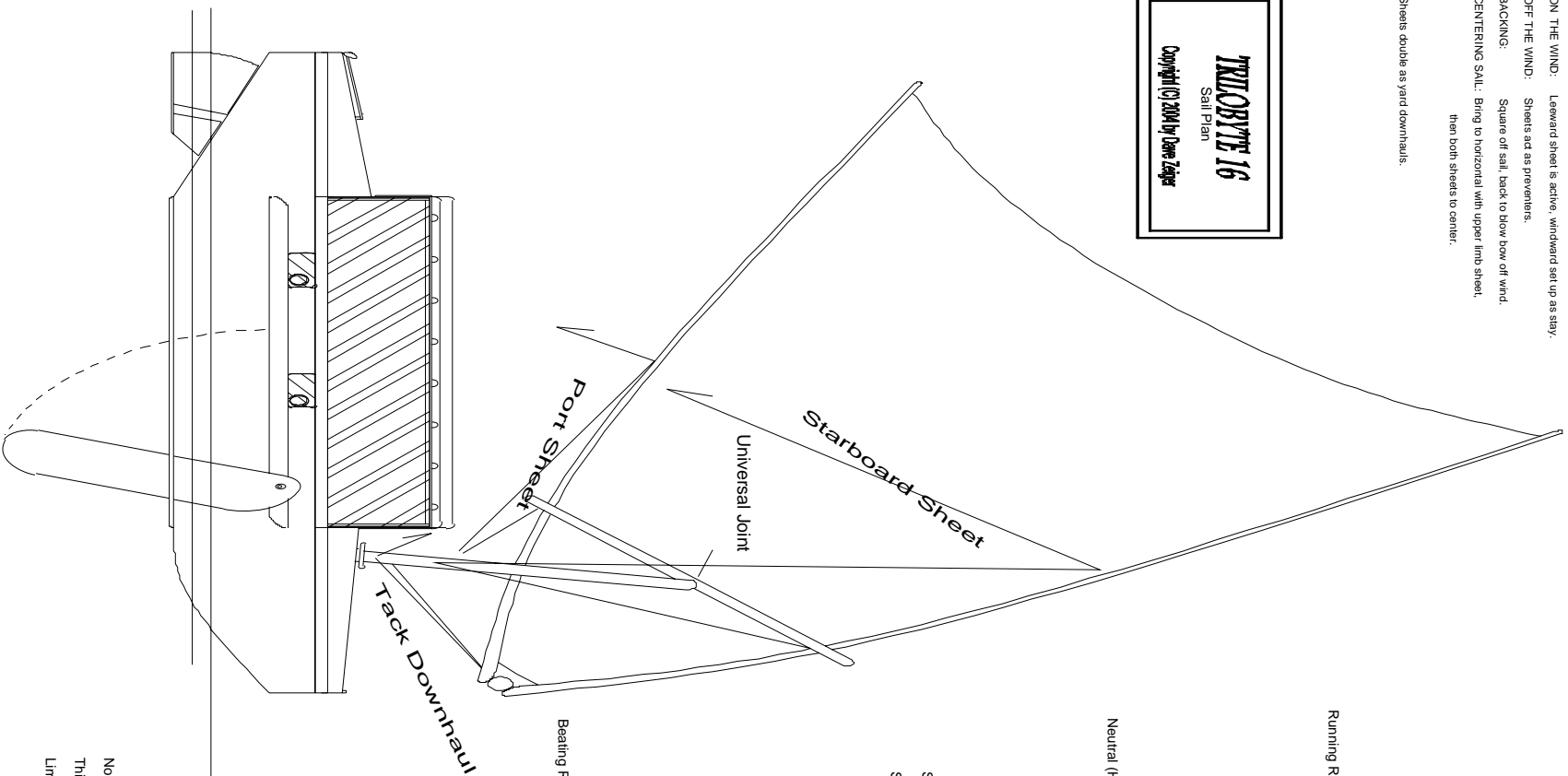
Not Shown are Cleats, Towing Plate and Handles, Fairleads or Smokehead.
 Suggest using Thole-pins and Grommets in place of Oarlocks as drawn.



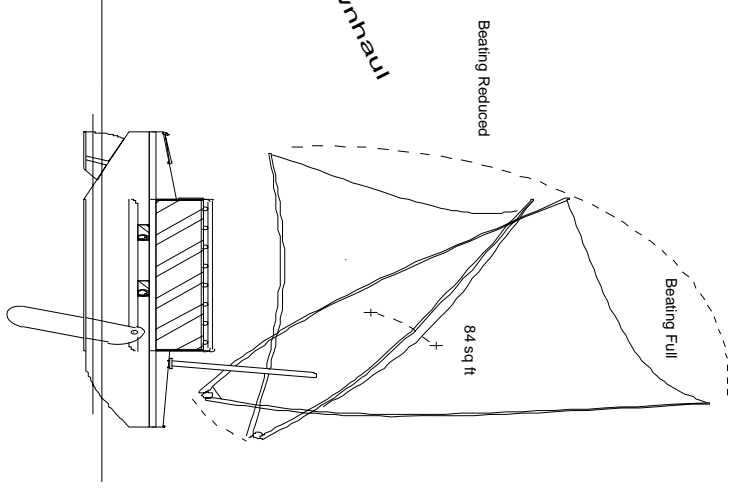
ON THE WIND: Leeward sheet is active, windward setup as stay.
 OFF THE WIND: Sheets act as preventers.
 BACKING: Square off sail, back to blow bow off wind.
 CENTERING SAIL: Bring to horizontal with upper limb sheet, then both sheets to center.

Sheets double as yard downhaul.

TRUCRYTE 16
 Sail Plan
 Copyright (c) 2004 by Dave Langer



Shock-corded neutral sail takes on a 'delta' shape
 Serves as Birini, Riding Sail and Rainwater Collector
 to about 25 knots of wind



No Reefing... roll sail toward horizontal to direct force upward.
 This converts heeling moment to vertical lift.
 Limbs spring toward one another in gusts, absorbing shock.